

PRODUCT CATALOG



LAGPRO

We are your lightning and grounding professionals.
For updated product and pricing information visit
www.LAGPRO.com or contact sales@LAGPRO.com.





LAGPRO is a leader in the lightning protection parts industry and is committed to providing exceptional customer service across North America. We manufacture and ship our parts directly to lightning protection installers, distributors, and provide insight to electrical engineers.

Our team is made up of industry leaders who came together to create a new kind of lightning protection parts company. LAGPRO puts the customer experience first and is committed to being a price leader. From the moment you place your order, it is verified by our skilled customer service team, double checked by our warehouse staff, packaged and shipped as soon as possible. We are committed to continue to innovate and to earn your business every day. At LAGPRO, we are YOUR lightning and grounding professionals!

TABLE OF CONTENTS

04

AIR TERMINALS

05

BASES

09

BONDING

11

SPLICES & CONNECTORS

13

CABLE STRAPS & HOLDERS

14

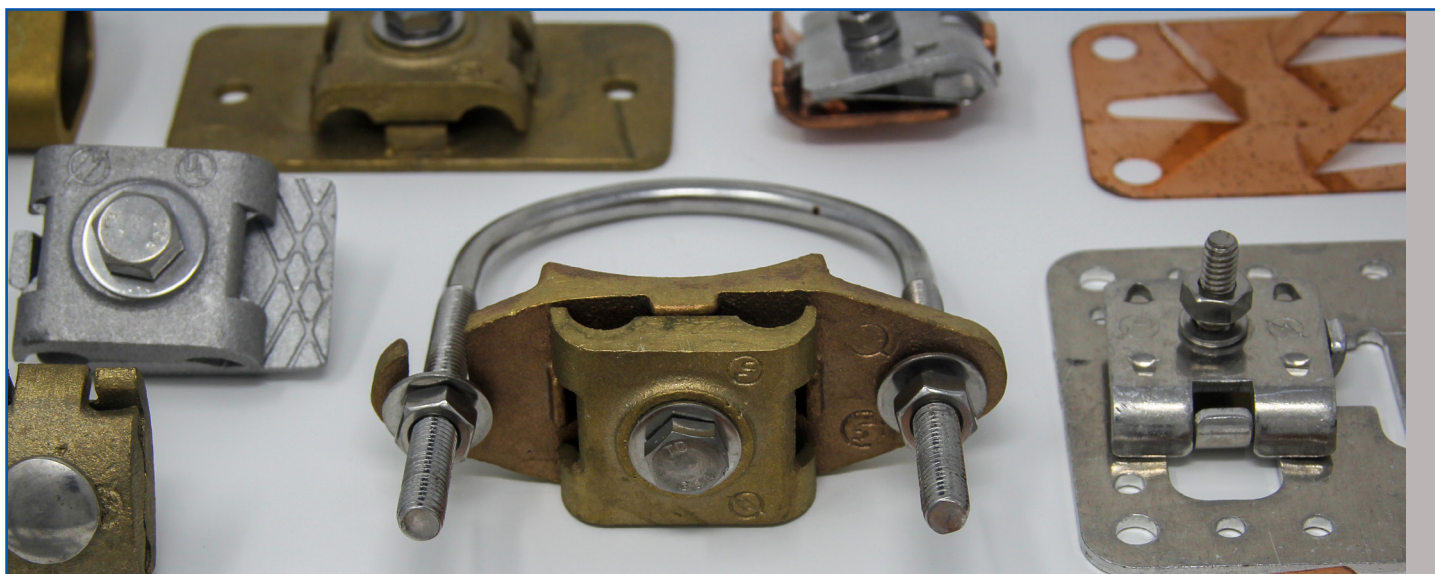
CONDUCTOR

15

GROUNDING

16

ACCESSORIES



LAGPRO designs and manufactures quality products that comply with UL96. We make ordering our parts simple and easy for you. Our materials are available for all types of structures across the USA. Quality products, competitive pricing and fast service to get parts to you when you need them.



Air Terminals

ALUMINUM SAFETY TIPPED AIR TERMINALS



Part Number	Class	Diameter	Length
AB-1010	I	1/2"	12"
AB-1011	I	1/2"	15"
AB-1012	I	1/2"	18"
AB-1013	I	1/2"	24"
AB-1014	I	1/2"	36"
AB-1015	I	1/2"	48"
AB-1026	II	5/8"	12"
AB-1027	II	5/8"	15"
AB-1028	II	5/8"	18"
AB-1029	II	5/8"	24"
AB-1030	II	5/8"	36"

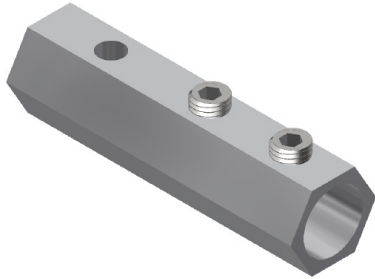
COPPER SAFETY TIPPED AIR TERMINALS



Part Number	Class	Diameter	Length
BB-1038	II	1/2"	12"
BB-1033	II	1/2"	15"
BB-1034	II	1/2"	18"
BB-1035	II	1/2"	24"
BB-1036	II	1/2"	36"
BB-1037	II	1/2"	48"

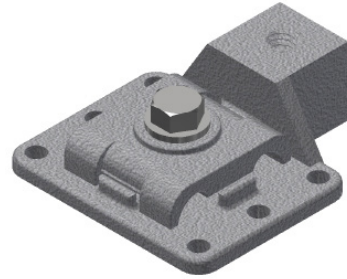
Bases

MACHINED INLINE BASE



Part Number	Class	Material	Threads
AD-1011	I	Aluminum	1/2"
AD-1012	II	Aluminum	5/8"
BD-1012	I	Copper	3/8"
BD-1011	II	Copper	1/2"

CAST DUAL MOUNT BASE



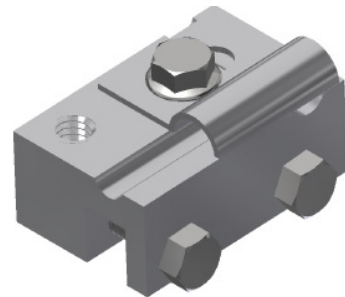
Part Number	Class	Material	Threads
AD-1003	I	Aluminum	1/2"
AD-1004	II	Aluminum	5/8"
BD-1003	I	Copper	3/8"
BD-1004	II	Copper	1/2"

CAST OFFSET BASE



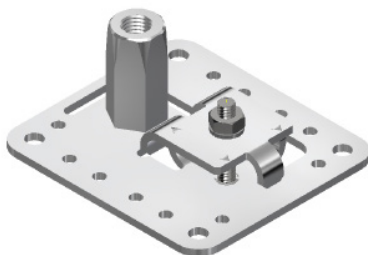
Part Number	Class	Material	Threads
AD-1009	I	Aluminum	1/2"
AD-1010	II	Aluminum	5/8"
BD-1009	I	Copper	3/8"
BD-1010	II	Copper	1/2"

MACHINED STANDING SEAM POINT BASE



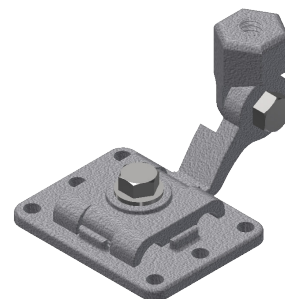
Part Number	Class	Material	Threads
AD-1015	I	Aluminum	1/2"
AD-1016	II	Aluminum	5/8"
BD-1015	I	Copper	3/8"
BD-1016	II	Copper	1/2"

STAMPED UNIVERSAL ADHESIVE BASE



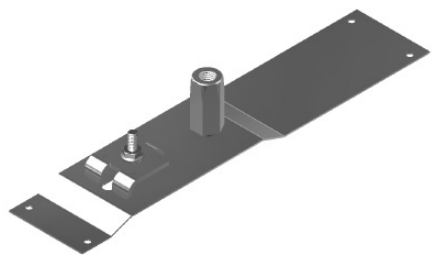
Part Number	Class	Material	Threads
AD-1001	I	Aluminum	1/2"
AD-1002	II	Aluminum	5/8"
BD-1002	II	Copper	1/2"

CAST UNIVERSAL SWIVEL BASE



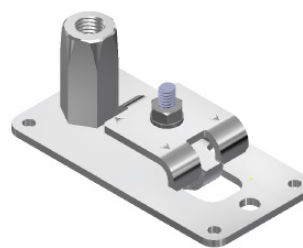
Part Number	Class	Material	Threads
AD-1013	I	Aluminum	1/2"

STAMPED RIDGE MOUNT POINT BASE



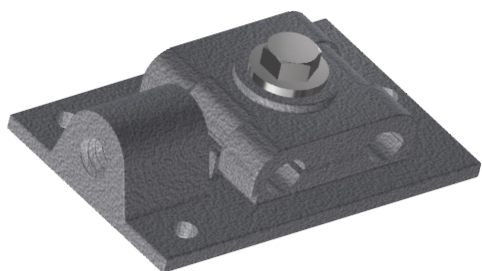
Part Number	Class	Material	Threads
AD-1017	I	Aluminum	1/2"
AD-1018	II	Aluminum	5/8"
BD-1017	I	Copper	3/8"

STAMPED NARROW HORIZONTAL BASE



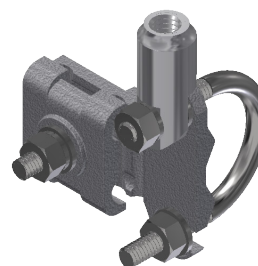
Part Number	Class	Material	Threads
AD-1005	I	Aluminum	1/2"
AD-1006	II	Aluminum	5/8"
BD-1005	I	Copper	3/8"
BD-1006	II	Copper	1/2"

CAST SIDE MOUNT BASE



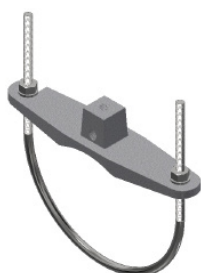
Part Number	Class	Material	Threads
AD-1050	I	Aluminum	1/2"
AD-1051	II	Aluminum	5/8"
BD-1051	I	Copper	3/8"
BD-1050	II	Copper	1/2"

CAST SWIVEL MOUNT PIPE BASE WITH CABLE CONNECTION (1/2" - 1")



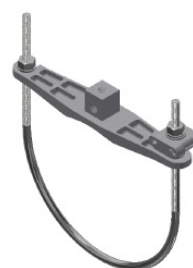
Part Number	Class	Material	Threads
AD-1044	I	Aluminum	1/2"
AD-1045	II	Aluminum	5/8"
BD-1044	I	Copper	3/8"
BD-1045	II	Copper	1/2"

CAST DUAL MOUNT U-BOLT PIPE BASE WITHOUT CABLE CONNECTION (4.50" - 6.75")



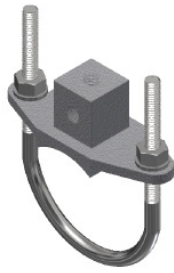
Part Number	Class	Material	Threads
AD-1037	I	Aluminum	1/2"
BD-1038	II	Copper	1/2"

CAST DUAL MOUNT U-BOLT PIPE BASE WITH CABLE CONNECTION (6.75" - 8.625")



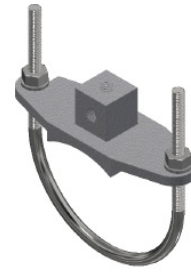
Part Number	Class	Material	Threads
AD-1031	I	Aluminum	1/2"
AD-1032	II	Aluminum	5/8"

**CAST DUAL MOUNT U-BOLT PIPE BASE
WITHOUT CABLE CONNECTION (1.90" - 3.00")**



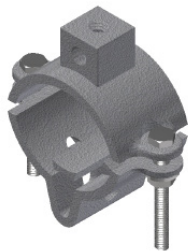
Part Number	Class	Material	Threads
AD-1033	I	Aluminum	1/2"
AD-1034	II	Aluminum	5/8"
BD-1033	I	Copper	3/8"
BD-1034	II	Copper	1/2"

**CAST DUAL MOUNT U-BOLT PIPE BASE
WITHOUT CABLE CONNECTION (2.75" - 4.50")**



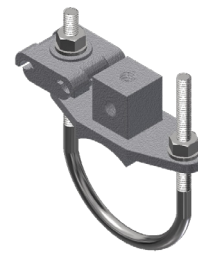
Part Number	Class	Material	Threads
AD-1035	I	Aluminum	1/2"
AD-1036	II	Aluminum	5/8"
BD-1035	I	Copper	3/8"
BD-1036	II	Copper	1/2"

**CAST DUAL MOUNT PIPE BASE WITH
CABLE CONNECTION (1.750" - 2.500")**



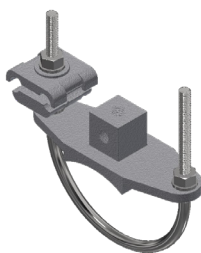
Part Number	Class	Material	Threads
AD-1023	I	Aluminum	1/2"
AD-1024	II	Aluminum	5/8"
BD-1023	I	Copper	3/8"
BD-1024	II	Copper	1/2"

**DUAL MOUNT U-BOLT PIPE BASE
WITH CABLE CONNECTION (1.90" - 3.00")**



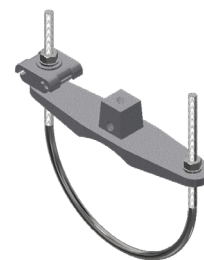
Part Number	Class	Material	Threads
AD-1025	I	Aluminum	1/2"
AD-1026	II	Aluminum	5/8"
BD-1026	II	Copper	1/2"

**DUAL MOUNT U-BOLT PIPE BASE
WITH CABLE CONNECTION (2.75" - 4.50")**

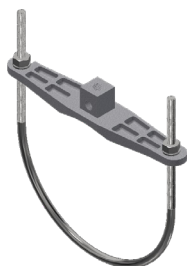


Part Number	Class	Material	Threads
AD-1027	I	Aluminum	1/2"
AD-1028	II	Aluminum	5/8"
BD-1028	II	Copper	1/2"

**DUAL MOUNT U-BOLT PIPE BASE
WITH CABLE CONNECTION (4.50" - 6.75")**



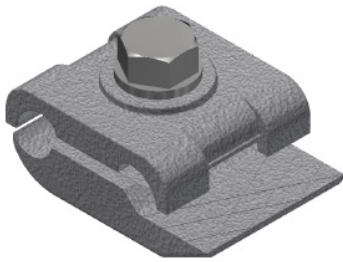
Part Number	Class	Material	Threads
AD-1029	I	Aluminum	1/2"
BD-1030	II	Copper	1/2"

**CAST DUAL MOUNT U-BOLT PIPE BASE "WITH
OUT" CABLE CONNECTION (6.00" - 8.625")**

Part Number	Class	Material	Threads
AD-1039	I	Aluminum	1/2"
AD-1040	II	Aluminum	5/8"
BD-1040	II	Copper	1/2"

Bonding

CAST HAND RAIL CLAMP (FITS 5/8" BEAM THICKNESS)



Part Number

Material

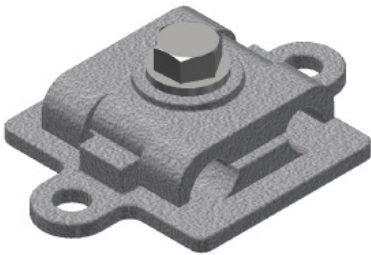
AF-1017

Aluminum

BF-1017

Copper

CAST BONDING PLATE 3" SQUARE CONTACT



Part Number

Material

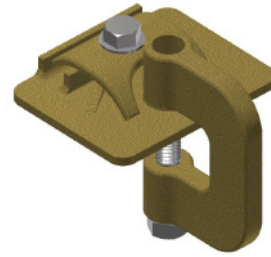
AG-1001

Aluminum

BG-1001

Copper

CAST BONDING C-CLAMP



Part Number

Material

Beam Thickness

BF-1014

Copper

1"

CAST PIPE CLAMP U-BOLT WITH CABLE CONNECTION



Part Number

Material

O.D. Pipe Size

AF-1005

Aluminum

1.315" to 2.000"

AF-1007

Aluminum

1.900" to 3.000"

AF-1009

Aluminum

2.75" to 4.50"

AF-1011

Aluminum

4.50" to 6.75"

AF-1013

Aluminum

6.75" to 8"

BF-1005

Copper

1.315" to 2.000"

BF-1007

Copper

1.900" to 3.00"

BF-1009

Copper

2.75" to 4.50"

BF-1011

Copper

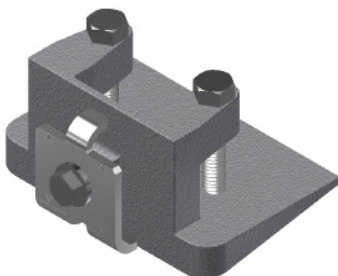
4.50" to 6.75"

BF-1013

Copper

6.75" to 8"

CAST BEAM OR PURLIN FLANGE CLAMP (FITS 1" BEAM THICKNESS)



Part Number

Material

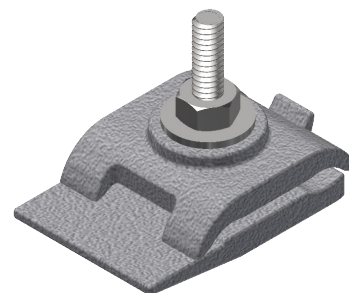
AF-1016

Aluminum

BF-1016

Copper

CAST HAND RAIL CLAMP 5/8" BEAM THICKNESS

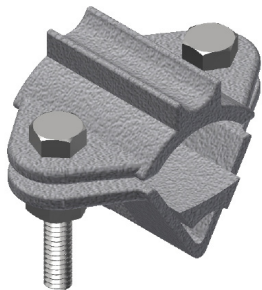


Part Number

Material

AF-1019

Aluminum

**CAST 1" PIPE CLAMP
3/4" - 1-1/4" PIPE**

Part Number

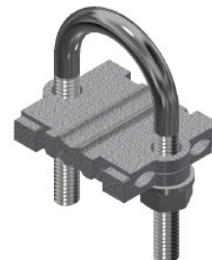
Material

AF-1006

Aluminum

BF-1019

Copper

**1" CAST U-BOLT FITS 4.00"
TO 1.315" O.D. PIPE**

Part Number

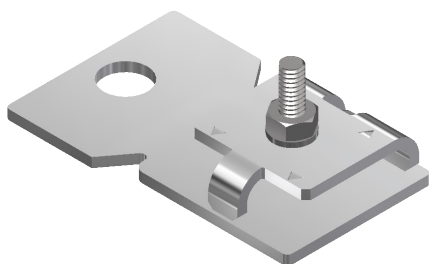
Material

AF-1004

Aluminum

BF-1004

Copper

**STAMPED 3" BONDING LUG
WITH 9/16" HOLE**

Part Number

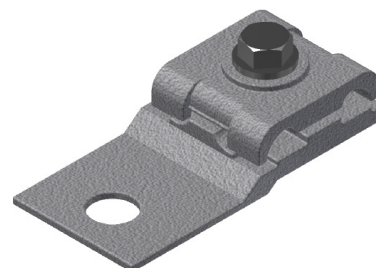
Material

AG-1011

Aluminum

BG-1011

Copper

**CAST 3" BONDING LUG
WITH 9/16" HOLE**

Part Number

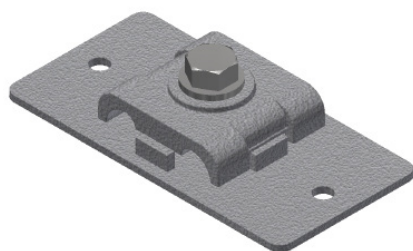
Material

AG-1010

Aluminum

BG-1010

Copper

**CAST BONDING PLATE
8" SQUARE CONTACT**

Part Number

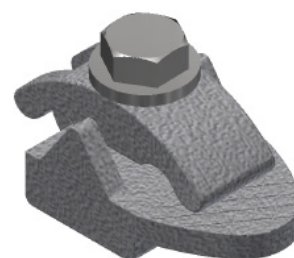
Material

AE-1014

Aluminum

BE-1014

Copper

SECONDARY BONDING CLAMP

Part Number

Material

AE-1015

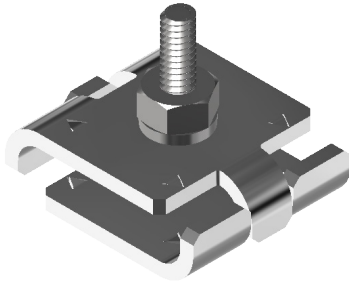
Aluminum

BE-1015

Copper

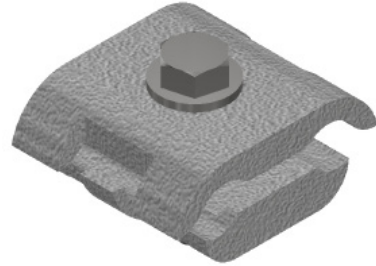
Splices & Connectors

STAMPED PARALLEL CABLE SPLICER WITH ONE CARRIAGE BOLT WITH 1 - ½" CONTACT



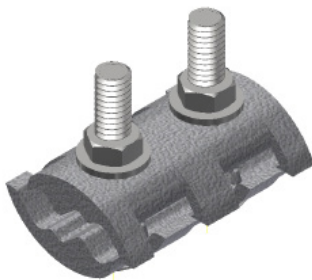
Part Number	Material
AE-1012	Aluminum
BE-1012	Copper

CAST PARALLEL CABLE SPLICER WITH ONE BOLT WITH 1 - ½" CONTACT



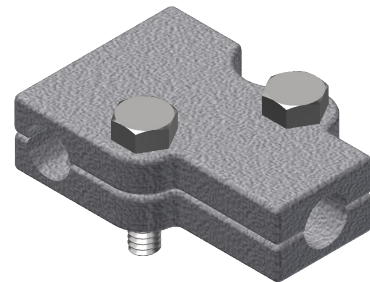
Part Number	Material
AE-1004	Aluminum
BE-1004	Copper

CAST PARALLEL CABLE SPLICER WITH TWO CARRIAGE BOLT WITH 2" CONTACT



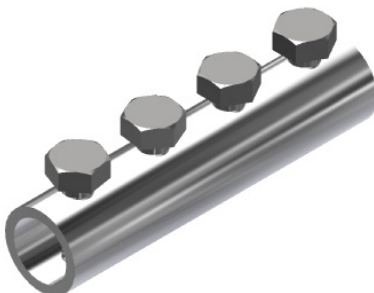
Part Number	Material
AE-1005	Aluminum
BE-1005	Copper

CAST TEE CABLE SPLICER



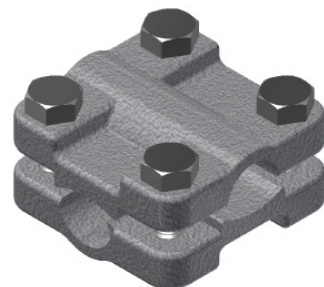
Part Number	Material
AE-1009	Aluminum
BE-1009	Copper

MACHINED STRAIGHT CABLE SPLICER WITH FOUR BOLT



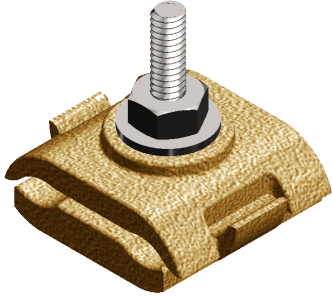
Part Number	Material
AE-1013	Aluminum
BE-1013	Copper

CAST CROSS RUN CABLE SPLICER WITH FOUR BOLT WITH 1 - ½" CONTACT



Part Number	Material
AE-1011	Aluminum
BE-1011	Copper

**CAST ONE BOLT PARALLEL
SPLICE WITH 1" CONTACT**



Part Number

Material

BE-1006

Copper

Cable Straps & Holders

**STAMPED ADHESIVE CABLE HOLDER
WITH THREE COMPRESSION FINGERS**



Part Number	Material
AH-1003	Aluminum
BH-1003	Copper

**STAMPED WIDE LOOP CABLE HOLDER
WITH 1/8" HOLE**



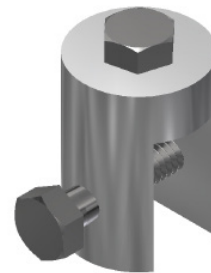
Part Number	Material
AH-1001	Aluminum
BH-1001	Copper

**STAMPED WIDE LOOP CABLE
HOLDER WITH 1/4" HOLE**



Part Number	Material
AH-1002	Aluminum
BH-1002	Copper

STANDING SEAM CABLE HOLDER



Part Number	Material
AH-1004	Aluminum
BH-1004	Copper

Conductor

COPPER CONDUCTOR ROPE LAY



Part Number	Class	Description	Reel
BA-1010	I	29 x 16 g	250'
BA-1011	II	28 x 14 g	250'

ALUMINUM CONDUCTOR ROPE LAY



Part Number	Class	Description	Reel
AA-1002	I	24 x 14 g	250'
AA-1007	I	24 x 14 g	500'
AA-1008	II	37 x 13 g	250'
AA-1009	II	37 x 13 g	500'

#6 INSULATED GREEN WIRE



Part Number	Material Threads
BA-1009	Copper

Grounding

3/4" X 5' GROUND ROD AND COMPRESSION COUPLER



Part Number

Material

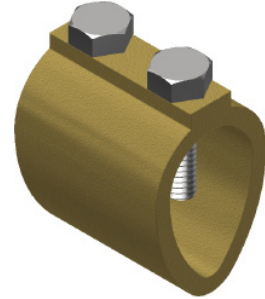
GA-1005

Copper Clad (Rod)

GA-1008

Copper (Coupler)

CAST GROUND ROD CLAMP TWO BOLT FITS (1/2" TO 3/4" GROUND ROD)



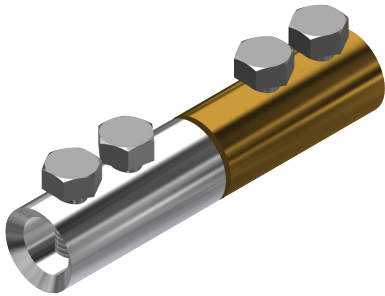
Part Number

Material

GA-1021

Copper

STRAIGHT SPLICE



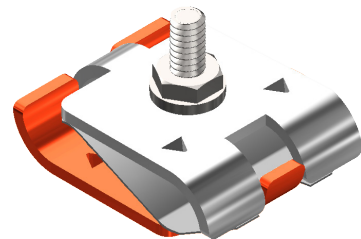
Part Number

Material

GB-1001

Bimetallic

PARALLEL SPLICE WITH 1 - 1/2" CONTACT



Part Number

Material

GB-1002

Bimetallic

BONDING LUG WITH 5/16" MOUNTING HOLE



Part Number

Material

GB-1003

Bimetallic

Accessories

GALVANIZED STEEL AIR TERMINAL TRIPOD WITH ½" BRACE (SCREW DOWN)



Part Number	Length
GC-1001	18"
GC-1002	24"
GC-1003	36"
GC-1004	48"
GC-1005	60"
GC-1006	72"
GC-1007	84"

GALVANIZED STEEL AIR TERMINAL TRIPOD WITH ½" BRACE (GLUE DOWN)



Part Number	Length
GC-1008	18"
GC-1009	24"
GC-1010	36"
GC-1011	48"
GC-1012	60"

AIR TERMINAL STANDARD COUPLING



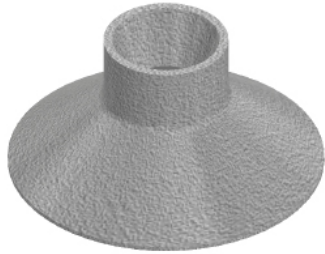
Part Number	Material	Description
AC-1001	Aluminum	½" Female to ½" Female
AC-1003	Aluminum	½" Female to ⅝" Female
AC-1005	Aluminum	½" Male to ⅝" Female
BC-1003	Brass	⅜" Female to ½" Female
BC-1008	Brass	½" Female to ½" Female

AIR TERMINAL SWIVEL COUPLING



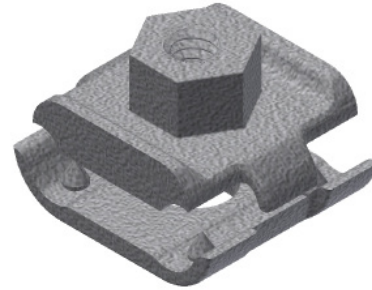
Part Number	Material	Description
AC-1009	Aluminum	½" Female to ½" Male
AC-1014	Aluminum	⅝" Female to ⅝" Male
BC-1019	Brass	½" Female to ½" Male
BC-1014	Brass	⅜" Female to ⅜" Male

CAST CONE ROOF FLASHING



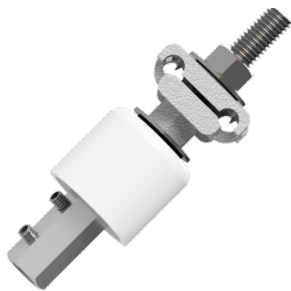
Part Number	Material
AD-1046	Aluminum
BD-1046	Copper

CONCEALED THROUGH ROUGH/WALL



Part Number	Material
AD-1047	Aluminum
BD-1047	Copper

CONDUIT CAP THROUGH WALL/ROOF CABLE CONNECTION



Part Number	Material
AD-1049	Aluminum
BD-1049	Copper
GB-1005	Bimetallic

THROUGH WALL/ROOF CABLE CONNECTION



Part Number	Material
AD-1048	Aluminum
BD-1048	Copper
GB-1004	Bimetallic

M-1 ADHESIVE SEALANT



Part Number

EA-1001

CONTACT INFO

29092 Krentel Rd., Lacombe, LA

Phone: 985-882-2984

Email: sales@LAGPRO.com

www.LAGPRO.com